



1000 INDUSTRIAL MAGNETIC LOCK

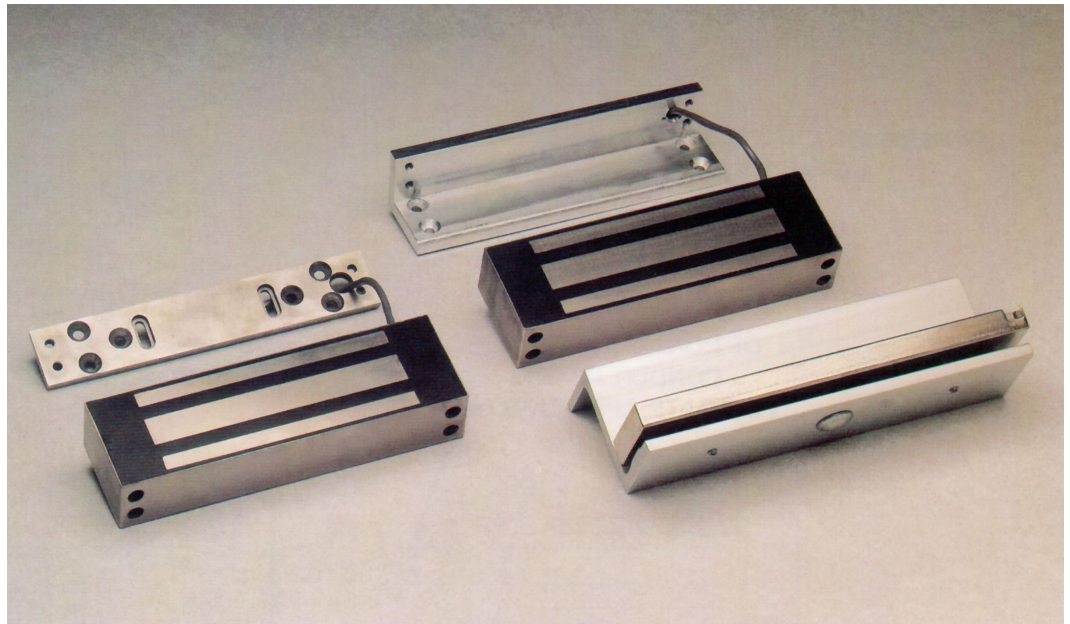
**1200 Pounds
Holding Force**

Compact Size

**Field Selectable
12 or 24 Voltage**

**Extra Low
Current Draw**

**Inswing/Outswing
Universal Mount**



Interior or Exterior Applications

The 1000 Series electromagnetic locks can be used in harsh environments to secure doors and gates. All electronics are sealed in epoxy and are protected by the steel housing cover. The housing armature and exposed face of the electric lock are nickel plated to resist rust and corrosion. A rigid conduit fitting can be provided on one end of the lock to protect power wiring in gate control installations.

Fail-Safe Operation

All ACI electromagnetic locks are fail-safe, releasing instantly upon command or loss of power. There are no moving parts to wear, stick or bind. Without any bolt travel time or possibility of misalignment to raise concern, both locking and unlocking are accomplished with ease and efficiency.

Extended Service Life

The rugged design and durable construction of this lock assures virtually unlimited actuations without fear of electrical fatigue or mechanical breakdown. Proudly made in the USA, a ten year limited warranty is provided on all electromagnetic locks.

Universal Mounting

The standard #1000 model is supplied with an adjustable mounting plate for use on outswing doors. The #1000-TJ unit is furnished with an angle lock mounting plate and an armature "Z" bracket for inswinging door installations. Any 1000 series lock may be converted in the field for inswing door applications by adding the angle mounting plate and "Z" bracket. An optional conduit fitted lock is available for exterior gate control applications.

Low Current Draw

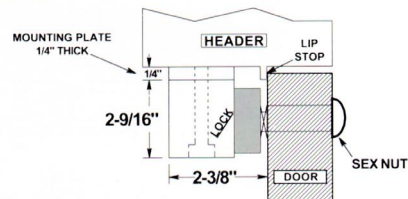
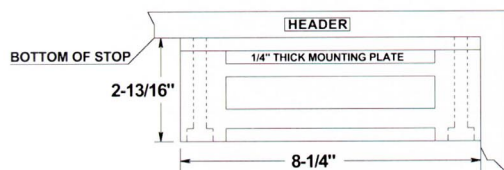
All 1000 series locks can operate on either 12 or 24 VDC. The efficient design of these locks requires only 170mA at 24 VDC or 340 mA at 12 VDC to maintain the rated 1200 pound holding force.

The well confined magnetic field, combined with the built-in spike and surge suppression system of these locks, allow integration with ACI's 'ECS' and other access control systems. Able to be controlled individually or simultaneously from one or several locations make the use of these locks ideal for securing manual or automatically operated doors and gates.

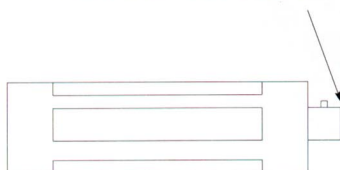


1000 SERIES ELECTROMAGNETIC LOCKS

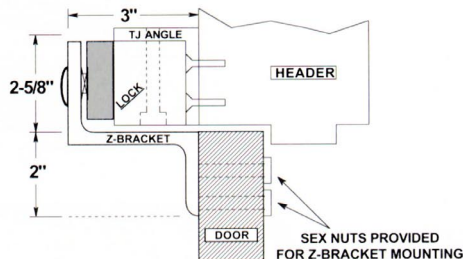
1000 FOR STANDARD OUTSWING DOOR APPLICATIONS



1000XCF OPTIONAL 3/4" FEMALE CONDUIT FITTING FOR GATE APPLICATIONS



TJ1000 STANDARD INSWING DOOR WITH Z-BRACKET & TOP JAMB ANGLE



Specifications:

Physical Size:

- #1000 Lock - 8-1/4" long x 2-9/16" high x 1-1/2" deep
- #1000 Armature - 6-1/2" long x 2-1/4" high x 5/8" thick
- #1000 Mounting Plate - 8-1/4" long x 1-1/2" wide x 1/4" thick
- #1095 Top Jamb Mounting Angle
8-1/4" long x 2" x 1-1/2" x 1/4" thick

Electrical:

- 170mA@24 VDC
- 340mA@12 VDC

In-Swinging Doors

ML-1000 TJ - 1000 series lock with top jamb mounting hardware

Finish:

1000 series locks are encased in a brushed nickel plated steel housing suitable for interior or exterior applications. Electromagnet face and armature are electroless nickel plated for high resistance to rust and corrosion.

Installation:

Typically these locks are mounted on outswinging doors using the mounting plate accompanying the unit. This mounting plate has elongated slots for ease of alignment and reinforced threaded holes for secure attachment of the lock to the plate. An access hole is also provided in the mounting plate to accommodate the power cable.

The 1000 TJ units are supplied with an angular mounting plate prepared for attaching the mounting angle to the face of the door frame. A "Z" bracket is also furnished for the mounting of the armature plate to the door.

Options:

The xCF Conduit Fitting option is available for this lock. For applications requiring custom finishes or other factory options please see our 1100 series locks.

Applications:

The 1000 series locks are supplied with a 4-conductor, 20 gauge power cable (equal to Belden #M-8444) 18" long. The operating voltage of the unit is determined by the order in which these leads are connected to the DC power source. The unit can be operated using either a 12 VDC or 24 VDC power supply.

Gate Mounting:

1000xCF specifies Conduit Fitting. When installing these locks on exterior swing and slide gates, #1000xCF locks should be specified to receive units factory prepared with the conduit fitting. This will afford protection to the power wiring for the lock.



303 West Main Street
Freehold, New Jersey 07728

1-888-810-6060
1-732-462-0511 Fax
www.acisecurity.com