

TR-LDR

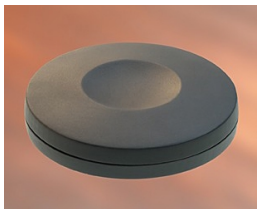
ECS Long Distance Vehicle Identification Reader



The ECS TR-LDR Long Distance Vehicle Identification Reader, simply stated, offers the absolute best range and overall convenience of any hands-free system available in the industry today.

The TR-LDR is an attractive, compact (12" x 10" x 4") and robust, all-environment reader that is capable of reading compatible TR vehicle tags at distances up to 33 feet and at speeds up to 125 mph. Operating in the ultra-high Gigahertz frequency range, the signal transmission is not affected by ambient RF interference as are other readers which provides consistent and reliable performance with no misreads.

ECS TR-LDR



ECS TR-WB

The TR-LDR reader is constructed to NEMA-4X standards allowing its reliable use in all environmental conditions and at temperatures as low as minus 22°F (-30°C). The TR-LDR offers Wiegand and RS-232, and many other output and communication protocols making it easy to seamlessly interface the reader into any access control or asset tracking system.

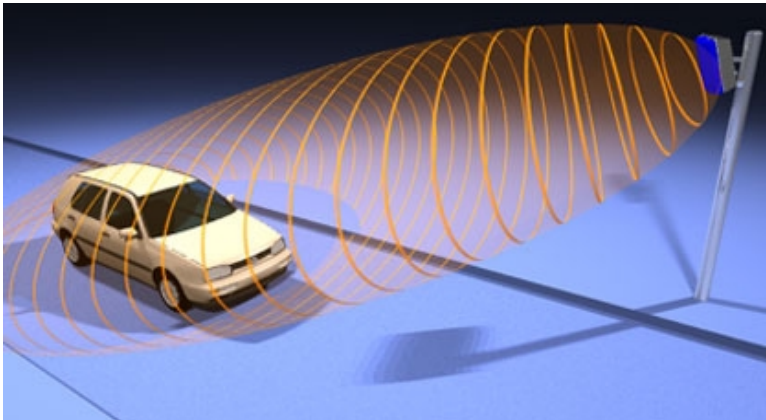
- **Convenient Hands-Free Automatic Vehicle Identification**
- **Adjustable Read Range of up to 33 Feet**
- **Weatherproof (Nema-4x) Protected Housing**
- **Multi-channel Frequency Offsets**
- **Compatible with Existing Access Control and Asset Tracking Systems**
- **Ultra-High Frequency Transmission Ensuring Reliable Tag Reads**
- **Industry Standard Wiegand and RS-232 Data Output, Among Others**



ECS TR-LDR Long Distance Vehicle Identification Reader

Specifications

Operating Frequency	2.438 - 2.457 GHz
Dimensions	12.2" x 9.8" x 3.9" (310 x 250 x 100 mm)
Weight	9.9 lbs (5 Kg)
Housing	Stainless Steel (AISI304) housing with ABS cover
Protection	IP65 (approx. NEMA4X)
Read Range	Up to 33 feet (10 Meters)
Range Check	Acoustic using built-in beeper
Operating Temperature	-22°F to +131°F (-30°C to +55°C)
Object Speed	Up to 125 mph (200 kph) at appropriate distance
Power	120 VAC -6%/+10%, 200mA, 50-60 Hz / 22 to 30 VDC, max. 1A
Power Consumption	<25VA (on AC); <20 Watt (on DC)
Frequency Offset	32 channels at channel spacing of 600kHz
Polarization	Circular (LHC)
Input	1 dry contact or TTL
Relay Output	1 Relay output (NO, common, NC), 24VDC @ 2A; 120VAC @ 1A
Output	Wiegand 26 bit; Wiegand 32 bit; Wiegand 37 bit; Barcode 39; FF56 and Omron ISO 7811/2
Antenna Connection	(Optional) 1 external inductive antenna connection
Antenna Output	120 kHz
Interfaces	RS232, RS422, 20mA CL, Profibus DP, Multidrop and TCP/IP
Communication Protocols	CR/LF, DC2/DC4, TCP/IP, Profibus DP and various OEM protocols
Mounting	Wall mounting set included; Optional pole mounting set and weather protection hood available



www.acisecurity.com

303 West Main Street ▪ Freehold ▪ NJ ▪ 07728 ▪ Tel. (888) 810-6060 ▪ Fax. (732) 462-0511

Your Source for a Full Spectrum of Access Control Systems and Accessories